

Department of State Growth

PASSENGER TRANSPORT DIVISION

Enquiries Daniel Palmer

Ph 6165 5199

Email daniel.palmer@stategrowth.tas.gov.au Web www.stategrowth.tas.gov.au

Your Ref Our Ref 1720-1, 1835, 1851, 1852



Parents of students using White Hills, Evandale, Evandale (via Relbia), Deddington School Buses

Dear Parents,

Proposed Re-design of Evandale, Deddington and White Hills School Bus Services

The Department of State Growth is responsible for contracting School Bus Services across Tasmania and has been reviewing all existing bus services as part of a major recontacting process (you can visit www.transport.tas.gov.au/project2018 for more information on this process).

As part of a wider change to services around Launceston, we are proposing some quite significant changes to the school bus services coming in from Deddington, Evandale and the White Hills areas from the start of next year (2019), and the purpose of this letter is to get feedback from parents on the proposed routes and timetables.

In the morning, it is proposed that there will be two services travelling into Launceston schools (See Timetables 1 & 2). One will start in Nile and will travel into Launceston via Evandale and Evandale Road. The other service will start in Evandale and travel to Launceston via White Hills Road and Relbia Road. These services will interchange at Glenara Lakes allowing students to still access all currently serviced schools in Launceston.

The current service that starts in Deddington is proposed to be shortened to start near Nile, as our Service Eligibility Guidelines require at least six students to board at the first stop, including at least four students travelling to their Nearest Appropriate School. Parents may be eligible for a conveyance allowance if they are affected by this, and recognising this as an obvious impact on some families, we are keen to talk to affected parents before this decision is made.

The services will run a bit differently in the Afternoon: a single service will now collect students from Kings Meadows High School and Youngtown Primary School and take them back to Evandale via Relbia Road (dropping students off along the way). This service will arrive in Evandale at approximately 3.25pm to maintain the connection with a Neil Cooley service onwards to Deddington.

Once this service has made this connection in Evandale, it will then continue along Evandale Road and Hobart Road, dropping off students, on its way to the Glenara Lakes Interchange to meet the second, later, afternoon bus. This is represented by the blue line on the third map.

The second service will pick up students from high schools and colleges in Launceston (see Timetable 4) before travelling out of Launceston to the Glenara Lakes Interchange. Students wishing to go to Relbia Road or White Hills Road will be able to interchange here onto the earlier bus which will be waiting for it to cover this route (See yellow line on Map 3), and those continuing onto Evandale via Evandale Road and beyond will continue on this bus to their destination.

We are also aware that a large number of Launceston Church Grammar Students are boarding and disembarking one of the Evandale services at other schools inside the Launceston urban area. This situation should never have been allowed to occur and we are looking at alternative urban school bus to transport these students to and from Launceston Church Grammar Senior Campus next year. More information will be provided on this at a later date.

Attached are maps, and a copy of indicative timetables, for the proposed services. Please note these timetables are not intended to cover every stop at this stage, it is merely included as a guide to the timing of the new service.

As I noted at the start of this letter, before a decision is made in regard to the future of the service, I wish to give all affected parents and students the opportunity to provide feedback. If you wish to provide any comment/feedback please contact me on 6165 5199 by 5th October 2018.

I do stress again that the existing services will continue to operate for the remainder of the 2018 school year, and we will confirm the final timetables or changes.

Yours sincerely

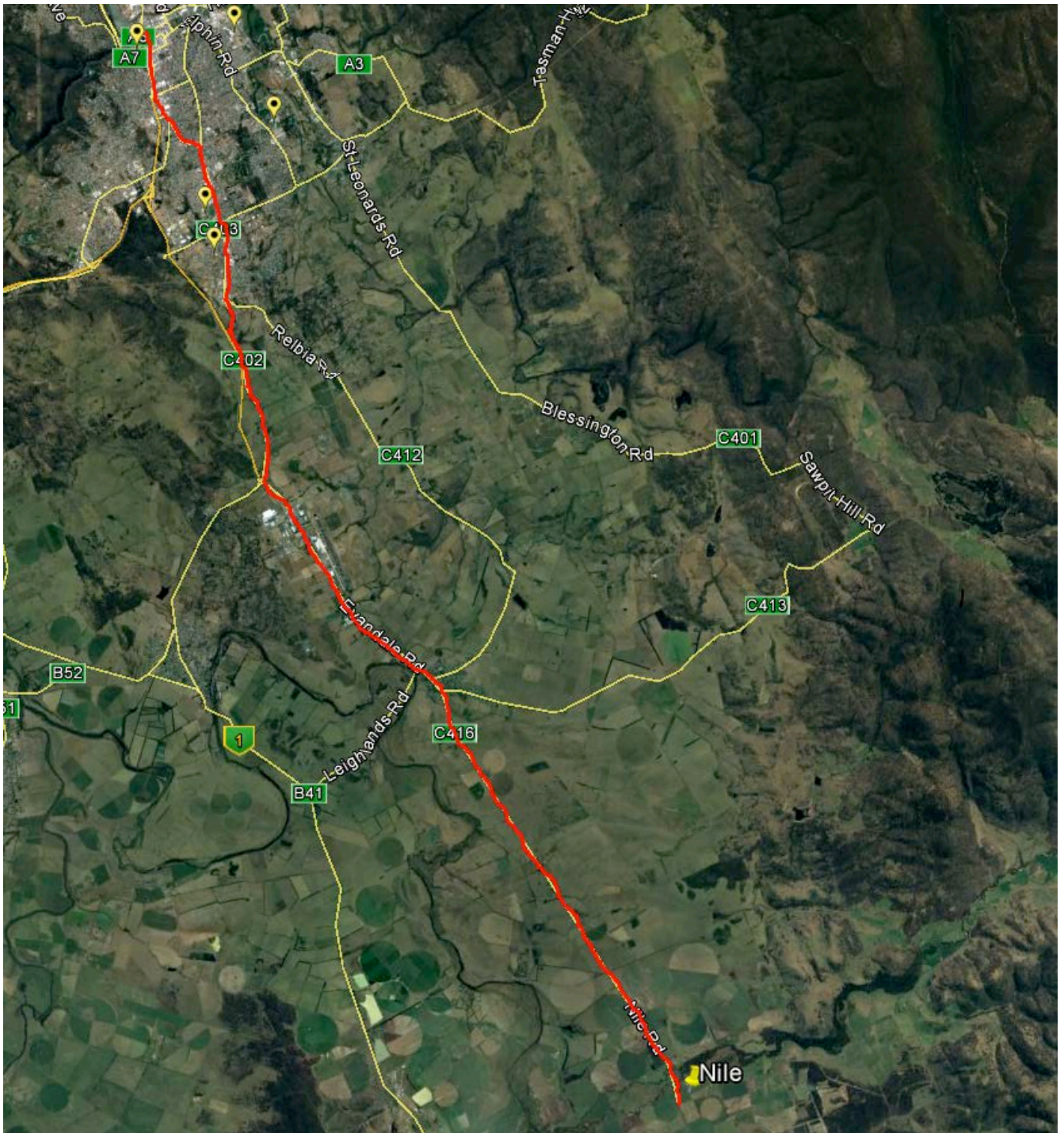
Daniel Palmer
PROJECT OFFICER - PROJECT 2018

18 September 2018

Timetable 1: Proposed Nile to Launceston via Evandale Service (AM).

| Stop Location | Estimated Arrival Time (am) |
|---|--------------------------------|
| Start at Nile Road/Deddington Road junction | 7:45 |
| Corner Nile Road and Bryants Lane | 7:50 |
| Nile road and Collins Street junction | 8:00 |
| Glenara Lakes Interchange | 8:20 |
| Kings Meadows High School | 8:25 |
| Launceston College | 8:45 |

Map 1: Proposed Nile to Launceston via Evandale Service (AM).

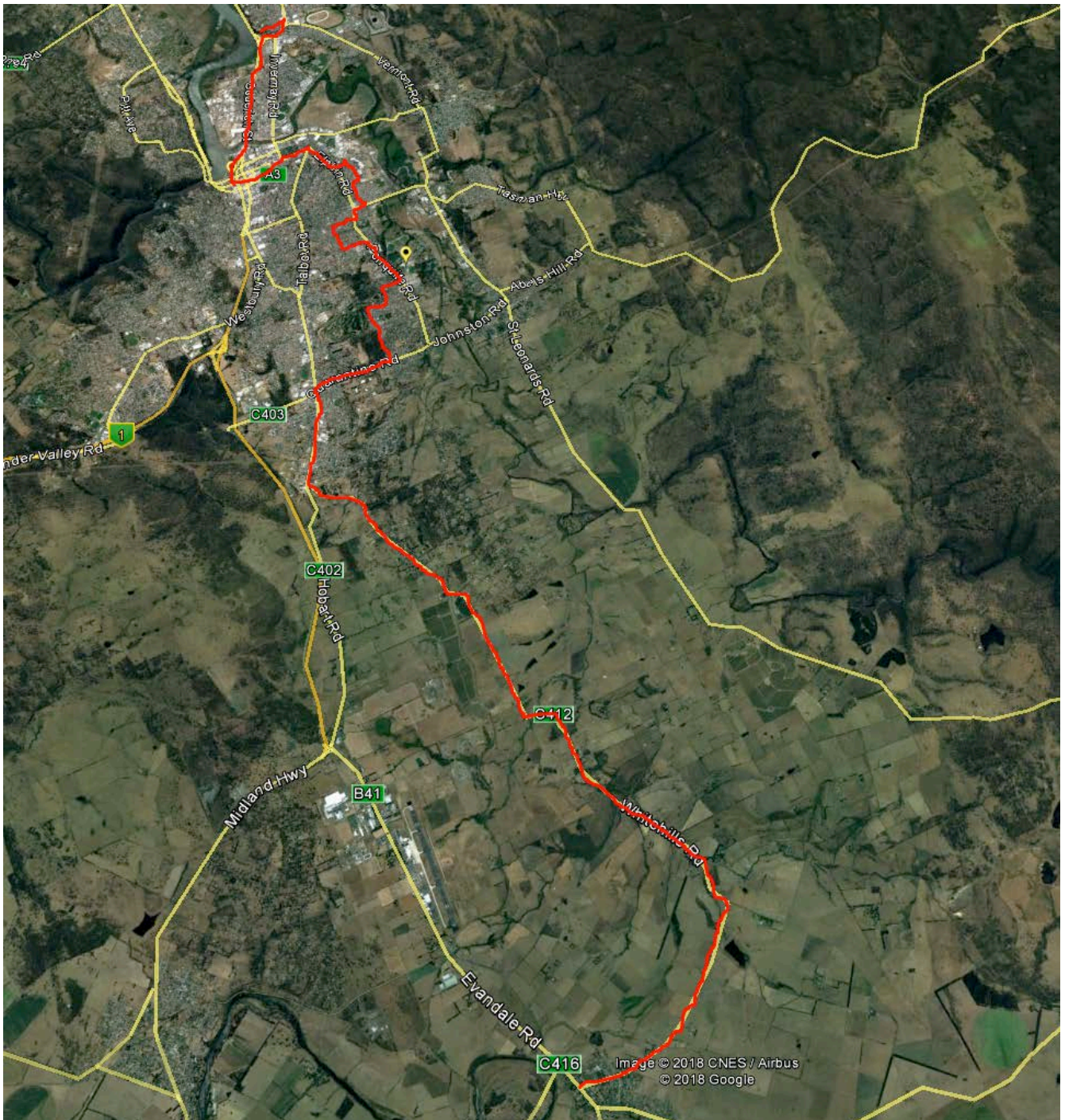


Timetable 2: Proposed Evandale to Launceston via White Hills and Youngtown Service (AM).

| Stop Location | Estimated Arrival Time (am) |
|---|--------------------------------|
| Start At Evandale Primary School | 7:55 |
| Glenara Lakes Interchange | 8:15 |
| Youngtown Primary School | 8:18 |
| Queechy High School* | 8:25 |
| Scotch Oakburn, 85 Penquite Road* | 8:27 |
| Launceston Preparatory School* | 8:34 |
| Scotch Oakburn, 74 Elphin Road* | 8:37 |
| Newstead College* | 8:38 |
| Launceston Church Grammar, Junior Campus* | 8:39 |
| Launceston Church Grammar, Senior Campus* | 8:50 |

Note: Schools/Colleges with an * are serviced by alternative buses after the Glenara Lakes Interchange.

Map 2: Proposed Evandale to Launceston via White Hills and Youngtown Service AM.



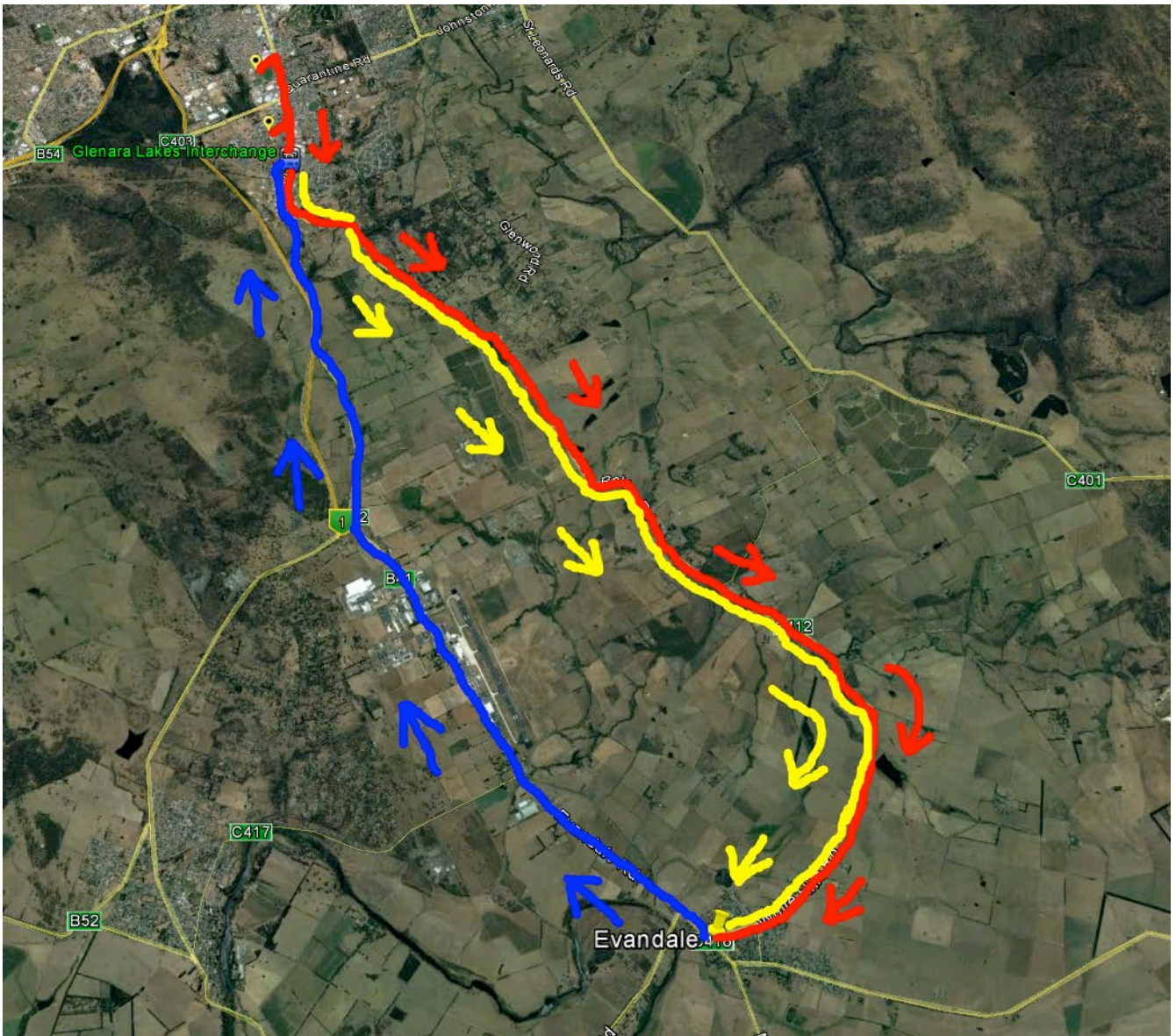
Timetable 3A: Proposed Kings Meadows to Evandale (via Relbia and White Hills) Service (PM).

| Stop Location | Estimated Arrival Time (pm) |
|---|--------------------------------|
| Start at Kings Meadows High School | 3:00 |
| Youngtown Primary School | 3:05 |
| Evandale Primary School | 3:25 |
| Back to Glenara Lakes Interchange to pick up students, and drop them off along Relbia Rd. | 3:50 |

Timetable 3B: Proposed Launceston to Evandale (via Relbia and White Hills) Connection Service (PM).

| Stop Location | Estimated Arrival Time (pm) |
|-----------------------------------|--------------------------------|
| Depart Glenara Lakes Interchange. | 4:15 |
| Evandale Primary School | 4:40 |

Map 3: Proposed Kings Meadows to Evandale (via Relbia and White Hills) Service (PM).



Red Line above represents the first PM trip from Kings Meadows High School to Evandale Primary (via Youngtown Primary).

Blue Line represents the second trip back to the Glenara Lakes interchange, and it can possibly transport students back to Launceston if missed the earlier bus.

Yellow Line represents the third and final trip with students from the Glenara Lakes interchange dropped off along Relbia and White Hills Roads.

Timetable 4: Proposed Launceston to Nile via Evandale Service (PM).

| Stop Location | Estimated Arrival Time (pm) |
|---|-----------------------------|
| Queechy High School | 3:05 |
| Launceston Preparatory School | 3:15 |
| Scotch Oakburn – Junior Campus | 3:20 |
| Launceston Church Grammar – Junior Campus | 3:25 |
| Scotch Oakburn – Senior Campus* | 3:35 |
| Newstead College* | 3:40 |
| Launceston Church Grammar – Senior Campus | 3:40 |
| Launceston College | 4:00 |
| Glenara Lakes Interchange – Students change for Relbia Road | 4:15 |
| Evandale – Corner High and Barclay Street | 4:30 |
| Nile Fire Station | 4:40 |
| Junction of Nile Road and Deddington Road | 4:45 |

Note: Schools/Colleges with an * are serviced by an alternative bus, transferred at Launceston College for this service.

Map 4: Proposed Launceston to Nile via Evandale Service (PM).

